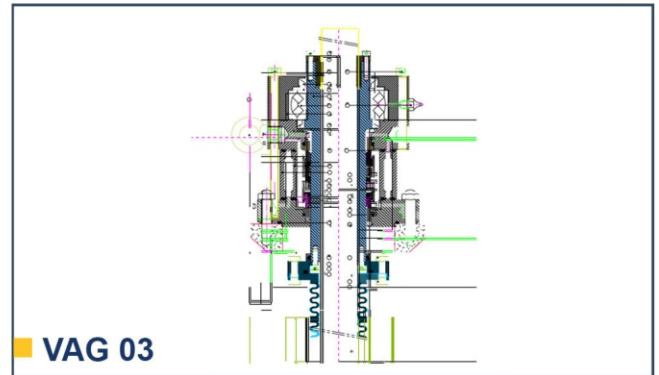
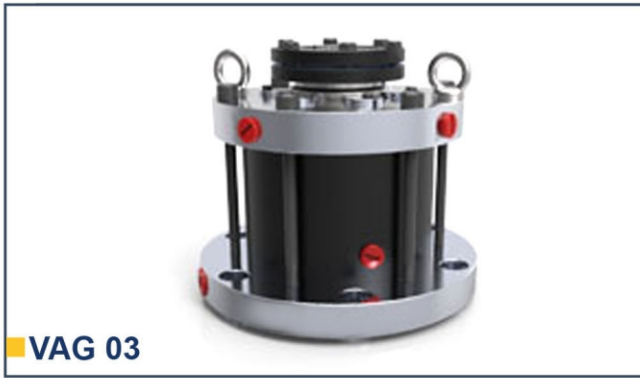


# VAG 03 – BOTTOM ENTRY AGITATOR SEAL



- Description :

- Bottom entry agitator seals which are dynamically tested being used for steel, glass lined, ss mixers, agitators and reactor vessels. These seal are higher Temperature application, the Seal assembly has got jacketed chamber to circulate chilled water to bring down the temperature. Also normally chilled / plain water is passed through the cooling coil of Thermosiphon to bring down the temperature of compatible barrier fluid circulated in seal housing to maintain the continuous cooling. Bottom portion of seal Housing is also designed with heat trapping jacketed cooling to reduce the temperature around the bottom seal face. These seal are all parts interchangeable like mating ring, seal ring, bearing, dynamic o ring etc.

- Seal Features:

- Double Seal Back to Back
- Balanced
- Outside mounted, Easy Installation
- Operated with pressurized barrier fluid & Jacketed Arrangement

- Operating Limits:

- Shaft Dia : 50mm to 150mm
- Pressure : Up to 15 bar
- Temp : -20°C to 200°C
- Speed : 900rpm

- Materials :

- Seal Faces – Carbon, Silicon, TC
- Secondary Seal – Viton, FFKM, PTFE, TTV
- Metal Parts – SS316, Hast-C, Alloy-20

- Applications :

- General Chemicals and its vapors
- Petrochemicals and its vapors
- Pharmaceuticals Industries
- Foods Industries